

# PAASCHE



## DC850R Pro Series Air Compressor

3/4 HP, 120 Volts, 60 Hz,  
Max Operating Pressure 100 PSI.  
Weight: 36.3 lbs (16.5 kg)

### Features:

- Portable & Lightweight
- Ultra Quiet 58 Decibels
- Thermally Protected
- Steady Air Flow
- Regulator
- Auto Stop and Start
- 1/4" NPT Fittings
- Dual Quick Connects
- Carrying Handle

**WARNING:** When a flammable liquid is sprayed, there may be danger of fire or explosion especially in a closed room. Keep compressor at least 20 feet away from areas where hazardous concentrations of flammable vapors are likely to occur. Disconnect power before servicing.

**ATTENTION:** Lorsqu'un liquide inflammable est pulvérisé, il peut y avoir danger d'incendie ou d'explosion, spécialement dans une pièce fermée; garder le compresseur à au moins 20 pieds des endroits où des concentrations dangereuses de vapeurs inflammables sont susceptibles de se produire. Débrancher avant toute maintenance.

### Compressor Specs:

- Dual Piston / Oil Free
- 3/4 HP
- 110-120 Volt /60HZ 5.5 Amps
- 100 Max Pressure
- 2.40 CFM @ 40psi  
1.50 CFM @ 90 psi
- Tank Size: 6L =1.585 Gallons
- 36 lbs (16.3kg)
- Dim: 17"L x 14"W x 13"H
- 5 Foot Electric Cord

### Operation Instructions:

- 1) Before operating Compressor, Install Muffler on compressor head "Hand tight" with drain hose facing down.
- 2) Apply PTFE pipe tape (Included) to male thread of Quick connect (Included). Thread onto 1/4" Airbrush hose end. Attach airbrush to 1/8" hose end.
- 3) Plug compressor into grounded outlet, pull up on red button on black box.
- 4) When compressor stops, press trigger on airbrush and hold down while turning large red air regulator clockwise to increase air, or counterclockwise to decrease air. When gauge reaches desired pressure release trigger.
- 5) Turn off compressor after use and loosen drain valve at bottom of compressor to empty out any standing water in tank .

# GENERAL & SAFETY INFORMATION

## GENERAL INFORMATION

The maximum pressure of the compressor is 0-100 PSI . The maximum operating pressure while spraying will vary depending on size of fluid tip, needle and aircap.

## THERMAL PROTECTOR

The motor of this compressor has a thermal overload protector. If the motor should overheat, the overload protector will shut off the motor. If this should occur, unplug the compressor and allow the motor to cool (approx. 5 minutes) and restart compressor.

## SEALING OF AIR HOSE

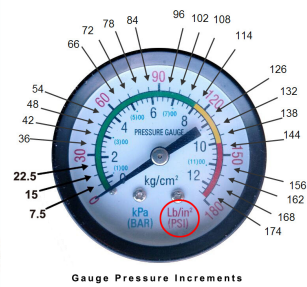
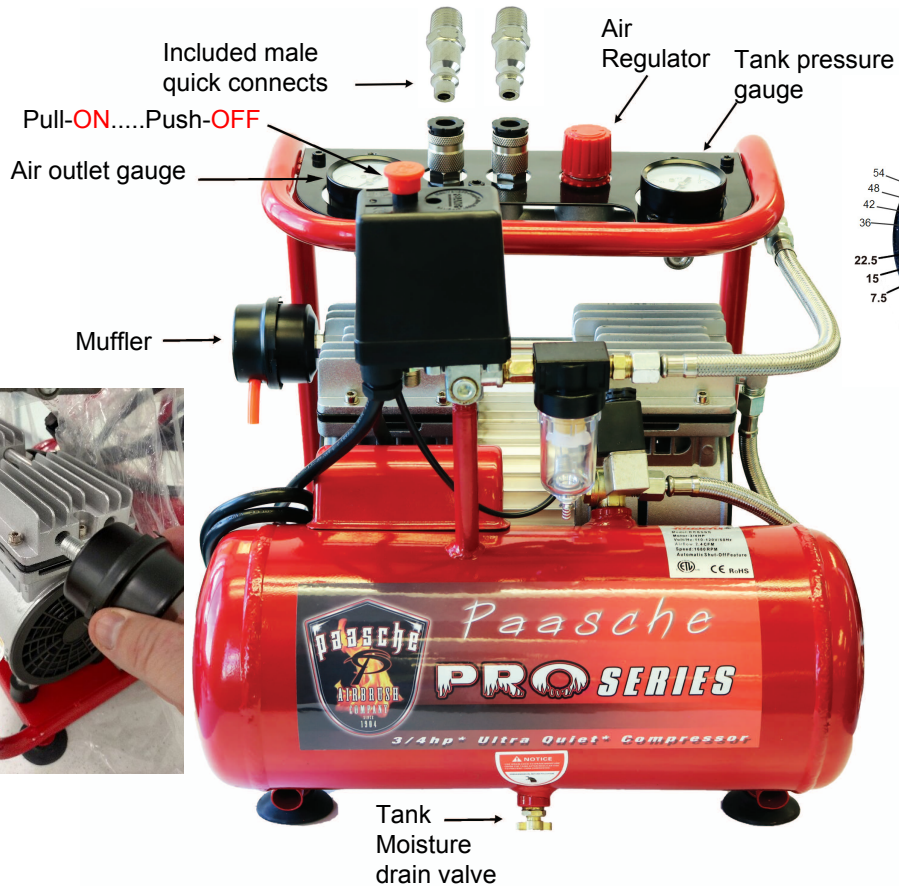
When attaching the female pipe thread fitting from your air hose to the compressor use PTFE pipe thread tape (Included) on the Male quick connect. Failure to do so may cause an air leak and your compressor will not shut off as it should. NOTE: This unit does not require any lubricants or oil. Applying oil to any part could result in damage to the compressor. All bearings, including those in the motor, are grease packed.

## AUTOMATIC SHUT-OFF FEATURE

This compressor has a built-in pressure switch that automatically shuts-off the compressor when the tank is full. It will immediately start again as soon as the tank reaches the pre-set psi.

## WARNINGS

- Only use 110-120 volt, 60 cycle power supply for this compressor.
- Before plugging in check to make sure compressor is in good condition.
- Only operate compressor in accordance with current safety regulations.
- Keep working area clean and uncluttered and make sure area is well ventilated. Never operate the compressor in the presence of flammable liquids or gases.
- Compressor air can produce dust, dirt and loose particles it comes in contact with. To prevent possible injury always wear safety goggles or glasses. Never point any nozzle or spray toward a person.
- The air compressor is powered by electricity. Like any electric device, if not used properly it can cause electric shock.
- Keep out of reach of children.



- 1) QM-2/QM-4 manifolds. For multiple hose hook ups.
- 2) Hose adapter. If your hose has a 1/8" NPT fitting get the HF-592. For the opposite get HF-116.
- 3) A-194 Airbrush Holder
- 4) AC-7 Airbrush Cleaning Brushes

## Suggested Accessories:



Paasche Airbrush Company  
 9511 58th Place  
 Kenosha, WI 53144  
 Phone: (800) 621-1907  
 Website: paascheairbrush.com  
 E-Mail: info@paascheairbrush.com

This compressor is CE Listed

Manufactured in China for Paasche