



# ER Series Air Eraser

## Steel Tip W/Carbide Insert

### OPERATING INSTRUCTIONS & REPLACEMENT PARTS

**WARNING:** Read instructions for proper care in handling and operation. Always wear a Respirator and Goggles when using the AEC Air Eraser. Use in Well Ventilated Area to remove dust. Always read and follow Cautions and Warnings on abrasive material being sprayed. Secure airhose to Airbrush with V-62 Wrench for safety and to prevent air leaks.  
**Maximum Air Pressure 65 P.S.I.**



#### APPLICATIONS:

The ER Air Eraser is a versatile instrument that can erase color errors and act as an etching tool. It is used by hobbyists and manufacturers to clean jewelry and fine parts, remove discoloration, rust and corrosion, etch glass or cut monograms. It is used by lithographers to highlight half-tones and erase defects without marring the surface or leaving a smudge. It is used extensively by model railroaders for weathering railcars and accessories.

#### DENTAL INFORMATION:

Indispensable in occlusal relationship analysis of gold casting. By dulling the high polish on the surface of inlays and crowns it is possible to identify minute occlusal contacts with their opposing teeth, without the discrepancy of any inter-occlusal thickness of material. The dull surface of a casting shows the markings of any tape, carbon or articulating paper with superior fidelity. When adjustments have been made, the surface can be dulled again and further analysis carried out.

#### OPERATION:

For general erasing, clean dry air at pressures of 30 to 65 p.s.i. may be used. To be sure of satisfactory performance, the R-75 regulator will remove within it's rated capacity water, oil, and other impurities from your source of air supply. The addition of an "optional" inline MT moisture trap will insure maximum impurity separation. Expect a slight trickle of abrasive to flow out after H-155 Button has been released. This is caused by air pressure in the cup being relieved.

#### Paasche Airbrush Co.

9511 58th Place

Kenosha, WI 53144

Phone: (800) 621-1907

Website: [www.paascheairbrush.com](http://www.paascheairbrush.com)

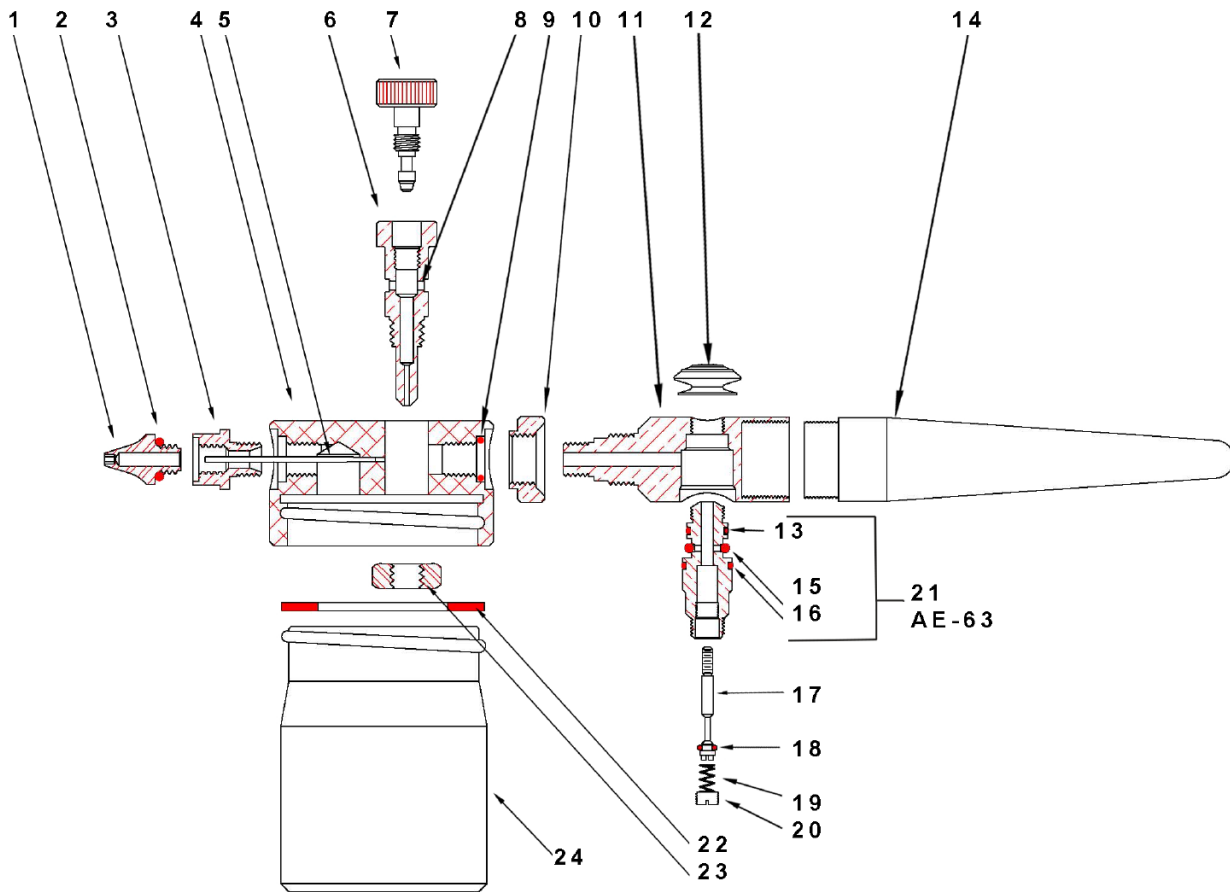
E-Mail: [info@paascheairbrush.com](mailto:info@paascheairbrush.com)

1. Attach airhose coupling to AE-63 Valve Casing.
2. Unscrew ER-47 Cup.
3. Fill cup 3/4 full with clean dry AEX abrasive and replace ER-47 cup. Tighten cup securely.
4. To prevent leaks, do not get any abrasive on the cup threads.
5. Regulate air pressure for erasing on paper surfaces to approximately 30 p.s.i. Use a higher air pressure of 45 to 65 p.s.i. for metal, gold castings, plastic or glass work.
6. Hold the Air Eraser the way you would a pencil. Move the Air Eraser with the AEC-34R Tip about 1/8" to 1/2" above the work surface. Adjust to achieve results desired.
7. Adjust ER-44 Valve Stem to the lowest point to avoid excessive use of abrasive.
8. For work requiring fast, heavy abrasive cutting, use AEX Fast Cutting Abrasive and high air pressure. Hold tip of the Air Eraser very close to the working surface to cut faster. Hold at a distance for blending and broad coverage.

#### COMPRESSORS:

The Paasche "DA400R" Air Compressors can be used with the ER Air Eraser at pressures up to 55 p.s.i.

The "DC850R" Compressor can also be used and has a dual quick connect feature for running (2) ER Air Erasers, or (1) ER and (1) Air gun to blow off area. Pressures up to 65 p.s.i.



NO.	PART NO.	DESCRIPTION
1.	<b>AEC-34R</b>	Tip with Carbide Insert
2.	<b>AE-43</b>	"O" Ring
3.	<b>ER-45</b>	Adapter
4.	<b>ER-42</b>	Cover
5.	<b>ER-48</b>	Jet
6.	<b>ER-43</b>	Valve Housing
7.	<b>ER-44</b>	Valve Stem
8.	<b>3A-4P</b>	"O" Ring
9.	<b>TAL-22</b>	"O" Ring
10.	<b>ER-46</b>	Nut
11.	<b>ER-41</b>	Shell
12.	<b>H-155</b>	Button
13.	<b>TAL-22</b>	"O" Ring
14.	<b>H-143</b>	Handle
15.	<b>AE-68</b>	"O" Ring (N40-008)
16.	<b>AE-69</b>	"O" Ring
17.	<b>AE-64</b>	Plunger
18.	<b>TAL-26</b>	"O" Ring
19.	<b>A-22</b>	Valve Spring
20.	<b>A-23R</b>	Air Valve Nut
21.	<b>AE-63</b>	Valve Casing
	Includes.....	13. <b>TAL-22</b>
		15. <b>AE-68</b>
		16. <b>AE-69</b>
22.	<b>4-G</b>	Gasket
23.	<b>1/4"-20B</b>	Hex Brass Jam Nut
24.	<b>ER-47</b>	Aluminum Cup

**AIR ERASER ABRASIVE COMPOUNDS:**

- AEX-Fast Cutting Abrasive - (Aluminum Oxide)**
- **AEX-6-240** 6 oz. (170g) Fast Cutting (Coarse Finish)
  - **AEX-5-240** 5 lbs. (2.3k) Fast Cutting (Coarse Finish)
  - **AEX-25-240** 25 lbs. (11.3k) Fast Cutting (Coarse Finish)
  - **AEX-5-400** 5 lbs. (only) (2.3k) Fast Cutting (Smooth Finish)

**EXTRA OPTIONS:**

- AEC-34** (Small) Tip With Carbide Insert
- V-62** Wrench
- 2DS** Softseal Disposable Respirator
- A-1/8-8MT** Air Hose W/MT Moisture Trap
- R-75** Regulator & Filter W/Gauge

**CAUTION:** It is recommended that a **2DS** Respirator be worn or Ventilation be used to remove excess abrasive.