

# Paasche®

## AH-JU- Automatic Spray Gun

### OPERATING INSTRUCTIONS AND REPLACEMENT PARTS

#### DESCRIPTION:

The A-JU- Automatic Spray Gun, is a compact air actuated production spray gun, ideal for operation in close quarters. It will spray a wide range of modern materials. 1/4 to 3 C.F.M. @ 45 P.S.I. required.

#### CONNECTIONS:

Connections to the gun are: Air Inlet 1/4" N.P.T. (M) and Fluid Inlet 1/4" N.P.T. (M). AH-JU Automatic Spray Gun dimensions are: 4-1/2" (L) x 1-3/16" (D)

#### PACKING WASHERS:

Standard washers are leather and treated in oil. For PTFE Packings see parts list, Page 3.

#### OPERATION:

1. Mount Gun in desired position.
2. Before installing, blow out air hoses with compressed air to remove foreign particles.
3. Connect hose from air supply to air inlet.
4. Connect fluid hose to fluid inlet.
5. Tighten all hose connections securely.
6. Adjust air pressure to required P.S.I. at the Air Regulator.
7. Adjust fluid volume by turning the U-3670 Fluid Adjusting Nut to the left or right.

**NOTE: DO NOT USE U-3670 FLUID ADJUSTING NUT AS A SHUT-OFF BY TURNING ALL THE WAY DOWN - IT MAY SPLIT THE TIP.**

#### TIP REMOVAL:

1. Turn off Air and Fluid Pressure.
2. Release Needle pressure from the seat of Tip, by backing off the U-3670 Fluid Adjusting Nut approximately 5 turns, then taking off U-3669 Rear Cap.

**WARNING:** Spray materials may be harmful if inhaled or allowed to come into contact with the skin or eyes. Consult the product label and Material Safety Data Sheet supplied for the spray material. Follow all safety precautions.  
**CAUTION:** Well Ventilated Area Required to remove fumes, dust or overspray. Secure airhose and fluid hose wrench tight for safety and to prevent leaks.  
**Maximum Air Pressure 100 P.S.I.**  
**Maximum Fluid Pressure 45 P.S.I.**

3. Loosen AU-12 Aircap Nut and remove Multiplehead Assembly. **Leave Needle in place.**
4. Unscrew AU-Tip. Place New AU-Tip in position.
5. To replace reverse above procedure.

#### MAINTENANCE:

Requirements of the AH-JU Automatic Spray Gun have been reduced to a minimum. (Old Packing Washers cause leakage of Air or Fluid). PTFE Packings are self-lubricating.

#### CLEANING:

Flush clean solvent through the Fluid passages of the Spray Gun and Wipe off the outside with clean solvent. Never leave the entire Spray Gun immersed in solvent. Dirty Aircaps and Tips should be cleaned by soaking in solvent and blown clean with air.

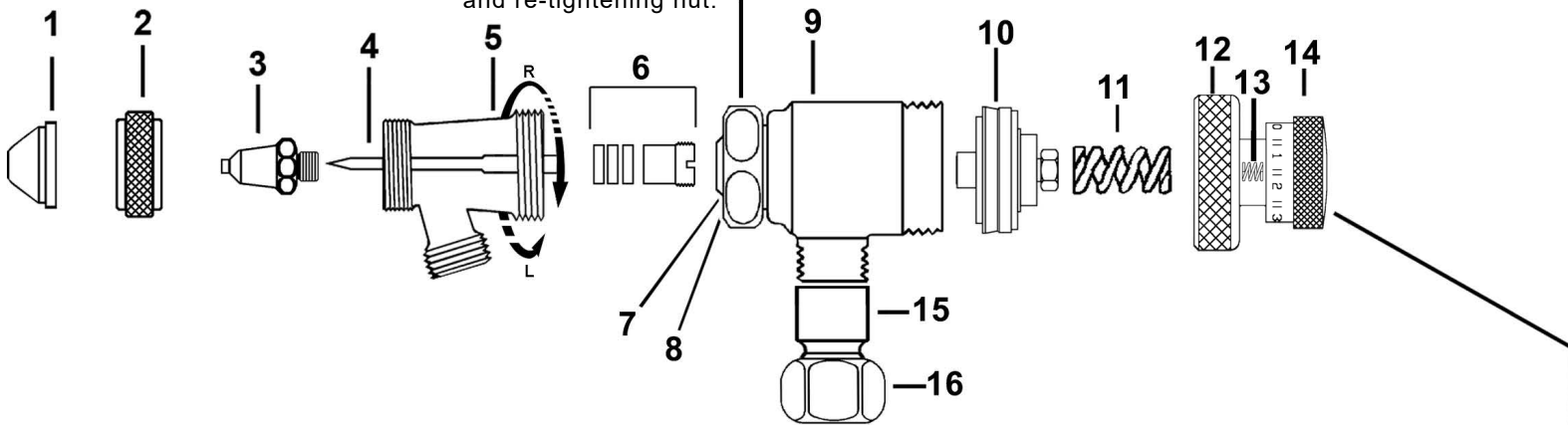
**NOTE:** Never use wire or sharp instruments to clean Fan Ports as permanent damage to the Air Ports will result in destroying uniformity of the fan pattern!

#### MATERIAL & NEEDLE SETTING:

Material should be mixed to consistency recommended by manufacturer and should always be strained through a lint free cloth or fine mesh strainer before using. Item U-3664 Piston Assembly has a needle chuck which locks the needle in position. The single groove on the shank of the needle indicates location at which to lock the piston. Lock piston slightly below mark for use with very light fluids and slightly above mark (nearer blunt end) for heavier materials.

No.	Part No.	Description
1.	AR-15-1	Air cap
2.	AU-12	Aircap Nut
3.	AU-1	Fluid Tip Needle
4.	A-AU-2-29/32	Fluid Body
5.	AU-7B	Packing Set
6.	U-3687	Small O-ring
7.	U-3632	Large O-ring
8.	U-3633	Cylinder Shell
9.	U-3045	PTFE Piston Assembly
10.	U-3664	Piston Spring
11.	U-2500	Rear Cap
12.	U-3669	Spring
13.	DA-13	Cap Assembly
14.	U-3670	Ball Stud
15.	U-3699	Swivel Nut
16.	U-1399	Swivel Nut

**Note:** Orientation of the (5.) fluid Body from left to right can be adjusted by loosening Cylinder shell nut, rotating fluid body to desired position and re-tightening nut.



**Do Not Use as a Shutoff by turning all the way Down, It will split the Tip.**