



F930-4

Automatic Humidifier Units (4 Spray Heads)

OPERATING INSTRUCTIONS & REPLACEMENT PARTS

WARNING: This product must be grounded to prevent electrical shock. Proper use of the three wire grounding cord installed with each unit is essential for its safe use. The plug must be plugged into an outlet that is properly installed and grounded in accordance with all local codes and ordinances. This unit is designed for the spraying of water only. **Disconnect power before servicing.**

HUMIDIFIER UNITS:

- **F910-2 Automatic Humidifier (Two Spray Heads) Capacity - 30,000 Cubic Feet, maximum output 30 Gallons (227 l) in 24 hours.**
- **F930-4 Automatic Humidifier (Four Spray Heads) Capacity - 60,000 Cubic Feet, maximum output 60 Gallons (454 l) in 24 hours.**

INTRODUCTION:

For dependable moisture and humidity control, these units provide an efficient method of maintaining uniform moisture in paper, fabric, tobacco, etc. at the same time helping to reduce the possibility of fire hazards. The water is finely atomized and quickly absorbed into the room atmosphere. Each Automatic Spray Atomizer requires 1 C.F.M. at 50 p.s.i. air pressure for the finest uniform atomization. Incoming shop air must be 80 PSI or higher. Regulator on unit can be set to 45 to 60 PSI.

FIRE PREVENTION:

Paasche Humidifier Units present an inexpensive means of reducing the danger of spontaneous combustion. Proper humidification limits dust diffusion and grounds static electricity.

HUMIDIFIER USES:

- **Printing and Bindery Plants-** They are of great value for keeping paper quality at its best to assure perfect registration when printing.
- **Tobacco and Similar Industries-** require uniform humidity control when aging and curing.
- **Textile Mills, Clothing Factories, Warehouses-** Fabrics tend to gradually deteriorate in dry atmosphere. When adequate humidity is maintained, goods retain their original luster and sheen. Dangers from lint and dust accumulations are greatly minimized with proper humidity.
- **Carton Manufacturers-** Winter conditions can dry out materials used to make boxes, causing tears and improper folding during manufacture or damage by the customer while in use.
- **Dry and Dusty Factories-** Factories which are dry and dusty due to insufficient humidity, are constantly subject to the dangers of spontaneous combustion. One method of reducing this hazard is with a uniform, accurate and dependable Automatic Humidifier Unit by Paasche.

The **F910 & F930 Series Automatic Humidifier Units** will automatically dispense gallons of finely atomized water, providing controlled humidity when the dial on the humidistat (Item #1) is adjusted to the humidity required. These Automatic Humidifier Units will automatically start and stop at the humidity setting. When properly connected to the water and electric systems of the building and to an air source that supplies constant air pressure (minimum 50 p.s.i.) to the **F910 & F930 Series Unit**, these units will deliver finely atomized water for extended periods.

Paasche Airbrush Company
9511 58TH Place
Kenosha, WI 53144
Phone: (800) 621-1907
Website: paascheairbrush.com
E-Mail: info@paascheairbrush.com

HUMIDIFIER INSTALLATION

1. Mount Humidifier Unit in convenient location using Mounting Bracket (not shown).
2. Connect air supply to HF-1/4" Air Inlet Valve.
3. Connect water supply to HF-1/4" Water Inlet Valve.
4. Open air inlet valve and water supply valve **under air supply valve** check for leaks. Tighten connections if required.
5. Turn humidistat control dial on item #1 counter-clockwise to off position before plugging cord into **grounded outlet**.
6. Turn U-3669 Needle Adjusting Knob can be used to reduce water flow. Do not use to shut off spray. If tightened too much needle and be pushed through tip.
7. Set Regulator item #2, between 45 & 60. Start at 45 PSI and increase until you get a nice atomization. Shop air must be 80 PSI or higher.
8. Plug unit into properly grounded Outlet (115V., 60cy).
9. Turn Humidistat control dial to on position and desired humidity. You will hear a "click" when activated.
10. Water flow rate may be adjusted using the U-3669 Fluid Adjusting Knob on back of each Spray Gun. Mist should always be absorbed into the surrounding air without settling out onto the floor under the unit.

CAUTION: DO NOT AIM DIRECTLY AT CEILING, WALL, MERCHANDISE OR MACHINERY.

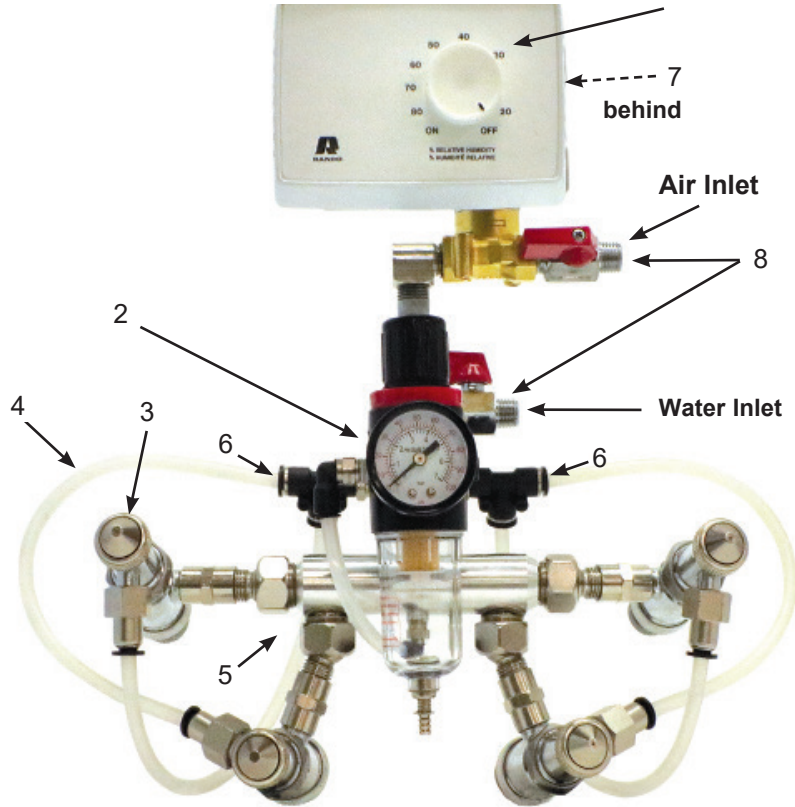
SAFETY NOTE: Do Not allow water vapor to condense or leaks to drip onto floor or unit, if this condition exists, check for:

- a. Water leaks from connections or Spray Gun nozzles.
- b. Insufficient atomization. Correct by increasing air pressure and/or decreasing fluid flow.
- c. Humidistat setting too high. Lower setting if necessary.
- d. Open drain valve on R-76 Regulator/Condenser item #2 periodically to drain airline moisture buildup.

CAUTION: Guard Face and Eyes so escaping air and moisture do not cause injury.

WARNING: Humidifier must never be used to create a fog condition in which water may collect on the unit and produce an electrical hazard.

F930-4 UNIT



MAJOR COMPONENTS FOR F900-SERIES HUMIDIFIERS

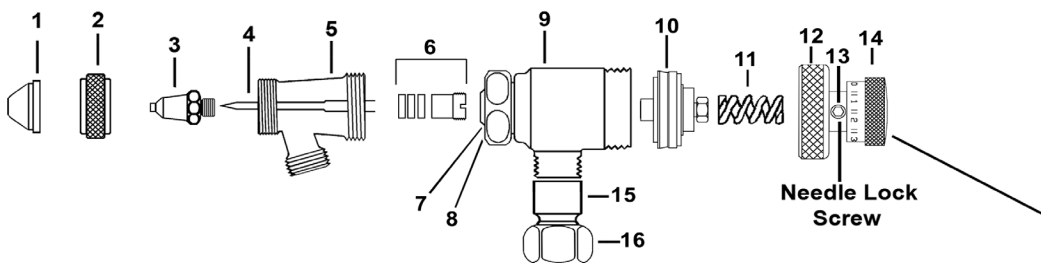
No.	Part No.	Description
1.	845	Humidistat
2.	R-76	Regulator & Moisture Trap
3.	AH-JUR-1	4 Spray Gun Heads
4.	T-04-10	Water Tubing (Sold in Kit below ONLY)
5.	HA-14-1/4	Fluid Fitting to Spray Gun (Sold in Kit below ONLY)
6.	F9-2-1/4P	Fluid Fitting to Mounting (Sold in Kit below ONLY)
7.	SM-880	Solenoid Valve
8.	HF-1/4	Valve Assembly (1)Water & (1) Air

FLUID HOSE COMPONENT KIT

1. F9-4F Fluid Hose & Connections for F930-4
Includes: (4) HA14-1/4 (4) T-04-10 (2) F9-2-1/4P

AH-JU AUTOMATIC SPRAY GUN

No.	Part No.	Description
1.	AR-15-1	Aircap
2.	AU-12	Aircap Nut
3.	AU-1	Fluid Tip
4.	A-AU-2-29/32	Needle
5.	AU-7B	Fluid Body
6.	U-3687	Packing Set
7.	U-3632	Small O-ring
8.	U-3633	Large O-ring
9.	U-3045	Cylinder Shell
10.	U-3664	PTFE Piston Assembly
11.	U-2500	Piston Spring
12.	U-3669	Rear Cap
13.	H-153	Set Screw
14.	U-3670	Cap Assembly
15.	U-3699	Ball Stud
16.	U-1399	Swivel Nut



Do Not Use as a Shutoff by turning all the way Down, it will split the Tip.