

Paasche®

A-BU-GLUE

Automatic Spray Gun

OPERATING INSTRUCTIONS AND REPLACEMENT PARTS

DESCRIPTION:

The A-BU-GLUE Automatic Extruding Gun, is a light to Medium duty air actuated production fluid extruder. Used to flow material, like glue onto a surface instead of spraying it. **Must be gravity or pressure fed for proper operation.**

CONNECTIONS:

Connections to the gun are: Air Inlet 1/4" N.P.T. (F) and Fluid Inlet 3/8"NPS (M). A-BU-GLUE Automatic Spray Gun dimensions are: 5" (L) x 2-1/4" (D). Packings and piston are PTFE.

Fluid Tips for the A-BU-GLUE Automatic Extruding Guns are available in several different sizes and all are stainless steel. The C.F.M. requirements are 2 C.F.M. @ 40 lbs. air pressure or more. NOTE: When either fluid Tip or fluid Needle is worn and requires replacement, it is recommended that both items be changed for best results.

All Tips and Needles are made using 303 Stainless Steel.

OPERATION:

1. Mount Gun in desired position
2. Before installing, blow out air hoses with compressed air to remove foreign particles.
3. Connect hose from air supply to air inlet fitting.
4. Connect fluid hose to fluid inlet supply.
5. Tighten all hose connections securely.
6. Adjust air pressure to 45-55 P.S.I. at the Air Regulator.
7. Adjust fluid volume by turning the (C.) Fluid Adjusting Knob to the left or right.
8. Adjust (B.) to desired Atomization

NOTE: DO NOT USE U-3178 AS A SHUT-OFF BY TURNING ALL THE WAY DOWN - IT MAY SPLIT THE TIP.

TIP REMOVAL:

1. Turn off Air and Fluid Pressure.
2. Release Needle pressure from the seat of Tip, by backing off the (C.) Fluid Adjusting Knob approximately 5 turns, then removing U-2686A Cylinder Cap Assembly.
3. Unscrew U-Tip. Place New U-Tip in position.
4. To replace, reverse above procedure.

WARNING: Spray materials may be harmful if inhaled or allowed to come into contact with the skin or eyes. Consult the product label and Material Safety Data Sheet supplied for the spray material. Follow all safety precautions.
CAUTION: Well Ventilated Area Required to remove fumes, dust or overspray. Secure airhose and fluid hose wrench tight for safety and to prevent leaks.
Maximum Air Pressure 100 P.S.I.
Maximum Fluid Pressure 45 P.S.I.

MAINTENANCE:

Requirements of the A-BU-GLUE Automatic Extruding Gun have been reduced to a minimum. PTFE Packings are self-lubricating. Flush clean solvent through the Fluid passages of the Spray Gun and Wipe off the outside with clean solvent. Never leave the entire Spray Gun immersed in solvent. Dirty Aircaps and Tips should be cleaned by soaking in solvent and blown clean with air.

CLEANING:

TROUBLE SHOOTING SPRAY PATTERNS:

A) Material will not flow out tip.

1. Check fluid pressure. Thicker materials can require higher pressure to flow.
2. Check air pressure. Must be high enough to activate the piston so needle is retracted to open fluid passage.
3. If fluid is too thick move to larger fluid tip.

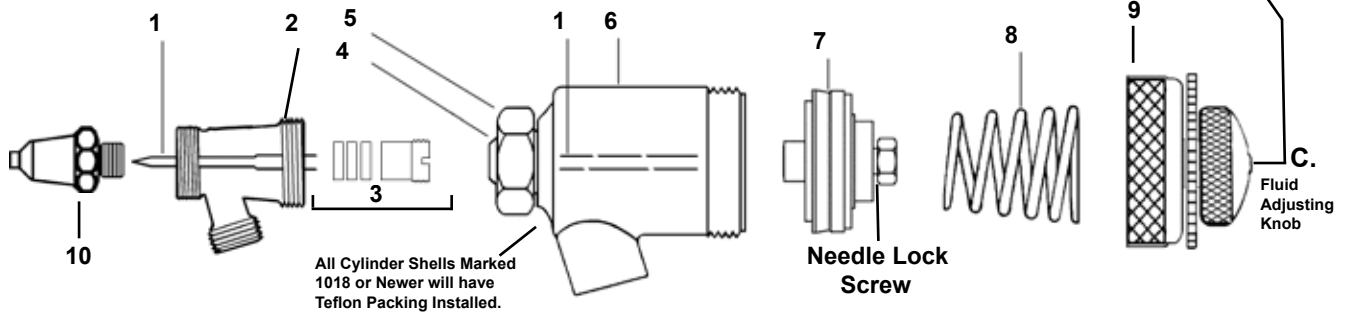
B) To clean flow your material thinner / cleaner through the sprayer

1. can remove Fluid Tip for further cleaning if material has dried and clogged the extruder

C) Fluid tip and Needle will wear from use. If you notice fluid leaking from the tip while the sprayer is not activated then the tip and needle need to be replaced.

Paasche A-BUD Automatic Spray Gun

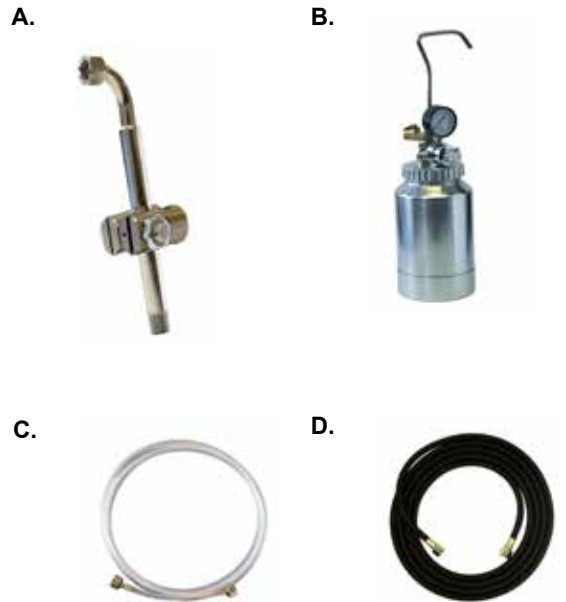
† Do Not Use as a Shutoff by turning all the way Down, It will split the Tip.
PTFE Packings are available for any model at an additional charge.



No. Part No. Description

1.	A-U-4	Needle
2.	BU-7D	Fluid Body
3.	U-3687	Packing Set
4.	U-3632	Small "O" Ring
5.	U-3633	Large "O" Ring
6.	U-1907B	Shell Assembly
7.	U3656	PTFE Piston Assembly
8.	U-2966	Piston Spring
9.	U-2686A	Cylinder Cap Assembly
10.	U-	Stainless Fluid Tip (Select Size 0, 2 or 4)

OPTIONAL ITEMS:



Size References: Tip and Aircap must match size

0	.055
2	.073
4	.093

- A. UM-96 Mounting Assembly
- B. PT-64 2 QT Paint Cup W/ Regulator
- C. HA-10-1/4-3/8 10' Fluid Hose w/ 3/8" & 1/4" Couplings
- D. HL-3/16-10 10 FT Air Hose W/ 1/4 NPT Couplings